

Consultant

© This drawing is the copyright of SHANLY ARCHES
No part of this drawing may be reproduced or used in any form
without the prior written permission of SHANLY ARCHES

Notes

Materials Key:

- A white render
- B red brick
- C sandstone
- D custom walking granite and clear glass system
- E stainless steel balustrade with glass infill
- F 607 (Kevlar) mineral fibre wool
- G anodised aluminium
- H timber cladding
- I double glazed windows set in metal frames
- J painted timber windows
- K glass lift to balcony
- L glass balustrade for balcony/behind
- M natural travertine cladding
- N monolithic stone string course, balustrade

| Rev. | Description | Date |
|------|-----------------------|----------|
| D | Material changes | 07.08.17 |
| C | Block redisplayed | 17.01.17 |
| B | HA's comments added | 17.02.16 |
| A | origin comments added | 24.12.15 |

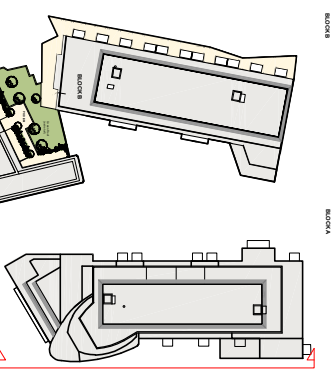
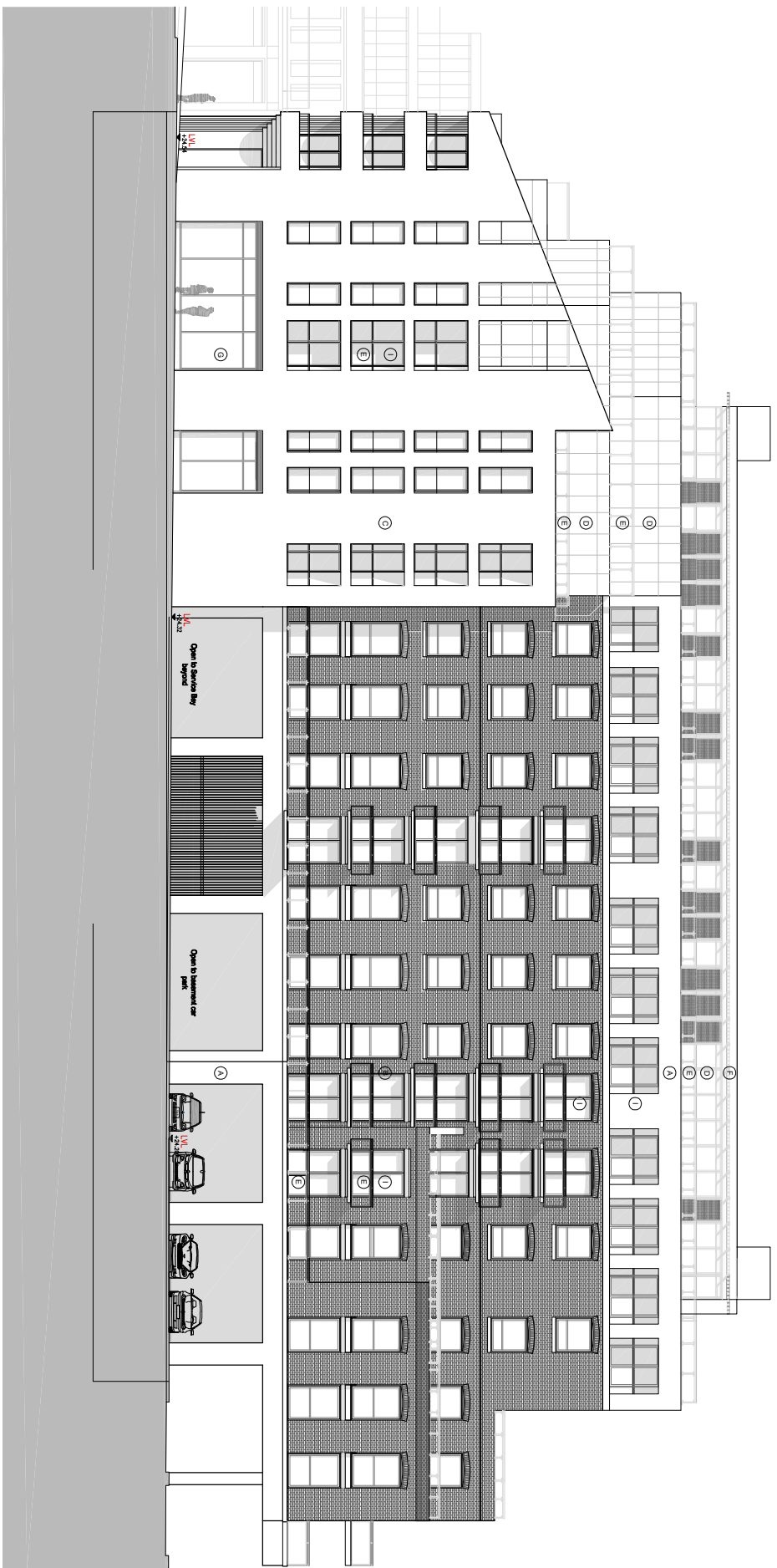
Project
CHAPEL ARCHES PHASE III
 Proposed Development at
 Crown Lane
 Maldenhead
 Barks

Drawing Title
BLOCK A
Crown Lane Elevation

SHANLY
— HOMES —

Sonbor, Aylesbury Em, Beaconsfield,
 Buckinghamshire, HP9 1LW
 Tel: 01494 871331
 Fax: 01494 871332
 DX 34507 Beaconsfield

| | | | |
|--------------|--------------|-----------|------------|
| Drawn By: | SE | Date: | 02.12.2015 |
| Scale: | 1:100 | Revision: | A1 |
| Drawing No.: | 871_DF_A_112 | Revision: | D |



Block B

Block A